

Grundfos EDIFACT D.96.A

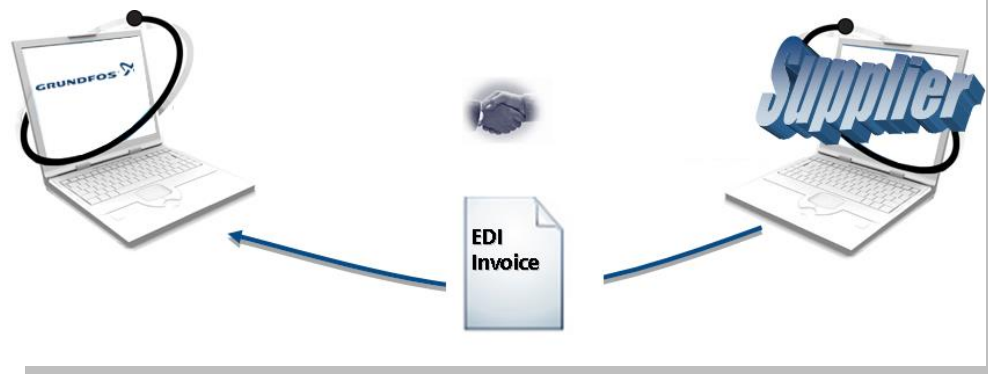
Title **INVOIC - Documentation**

Create Date 01-03-2003

Last Update 31.10.2014, version 2..07

Author Grundfos EDI Team

Owner Grundfos Group EDI Team



Prologue

Introduction	The present document defines the EDIFACT INVOICE documentation for Grundfos suppliers – the format in which Grundfos expect to receive when exchanging EDI INVOICE documents from Grundfos supplier partners.
Purpose	The purpose is to enable Grundfos supplier partners to apply to the EDI standard used when exchanging documents with Grundfos.
Target group	EDI consultants - implementing the technical EDI set-up at the Grundfos supplier partner.
About document	The document takes basis in the structure of EDIFACT D96A, see figure “Invoice structure”. For each segment in the figure a table lists the sub-element code, sub-element name, EDIFACT notation and Grundfos specific description. For each segment an example is given. At the last page an example of an EDIFACT INVOICE is given.

Change log

Date	Auth.	Description	Ver.
31-10-2014	HISZ	Added new Sender/ Receiver IDs for GCP,GOE	2.07
09-09-14	HISZ	Added new Sender/ Receiver IDs for GDK,GHI	2.06
14-03-13	HISZ	Added new Sender/ Receiver IDs for MXP,GSI,GMS,PPU,YCC,GMA,GDS	2.05
27-01-12	JAR	EAN location for GBJ updated from 5790000022984 to 5708601000836 in UNB	2.04
17-02-09	JAR	EAN locations added in UNB specifications	2.03
21-07-08	JAR	EAN locations added in UNB specifications	2.02
03-05-07	JAR	1154 Reference number - local company VAT numbers specified	2.01
29-09-06	JAR	PAC –invoicing spec added for PVC. PAC –invoicing spec added for Pallets, joists and frames. TAX-MOA - added option for additional info on local currency	1.21

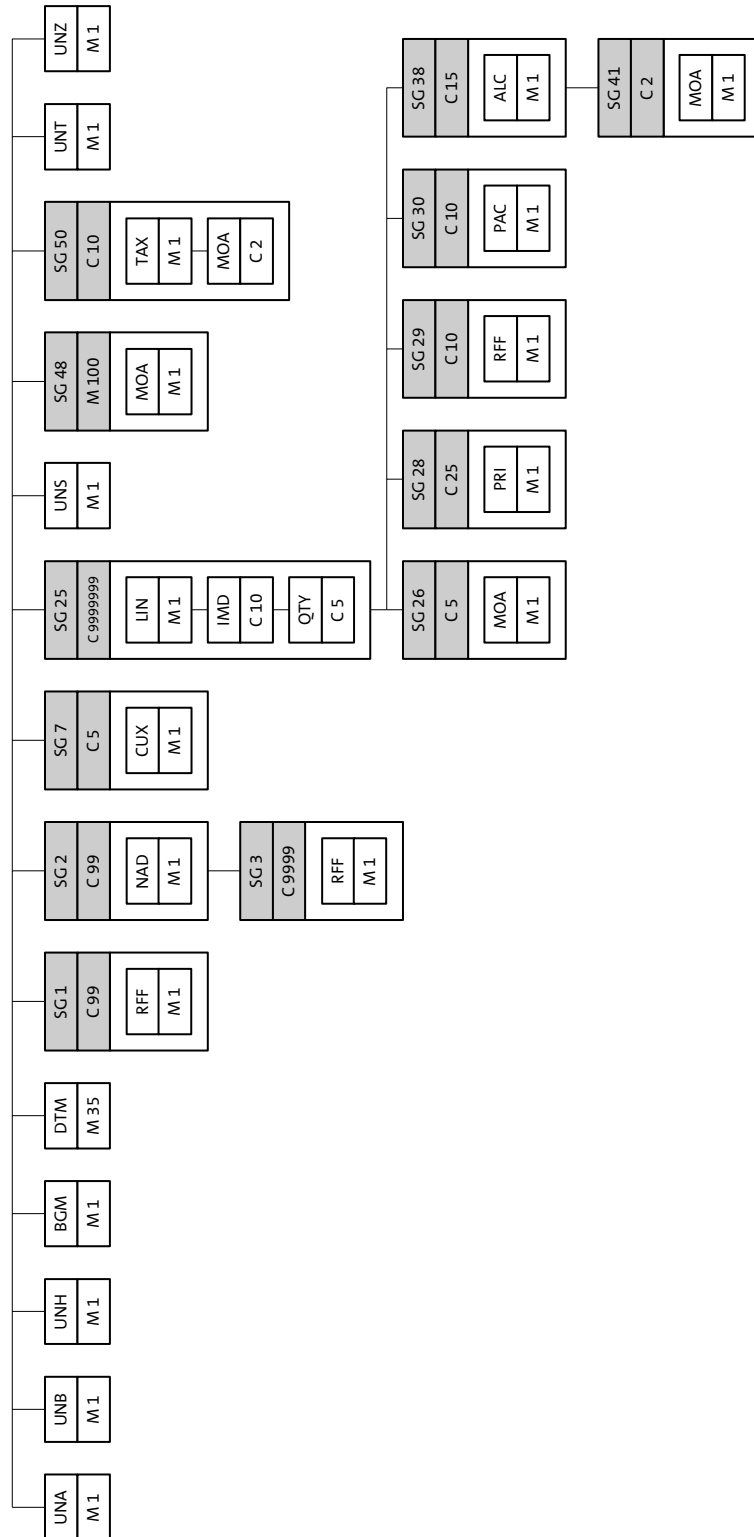
03-08-06	JAR	Document branded and further: UNB segment added sender ID for Grundfos companies RFF (ADE) + RFF (CO) segments: Comments has been stressed LIN segment added: 5495 Sub-line indicator 1082 Line item number	1.20
22-04-99	FFR	Document created	1.00

Content

GRUNDFOS EDIFACT D.96.A	0
PROLOGUE	1
CONTENT	3
GRUNDFOS EDIFACT - INVOIC STRUCTURE.....	4
UNA - SERVICE STRING ADVISE	6
UNB - INTERCHANGE HEADER (ENVELOPE)	7
UNH - MESSAGE HEADER	9
BGM - BEGINNING OF MESSAGE.....	10
DTM - DATE/TIME/PERIOD	11
RFF – REFERENCE (CO)	12
NAD- NAME AND ADDRESS.....	13
RFF – REFERENCE (VA+ADE)	15
CUX - CURRENCIES.....	17
LIN - LINE ITEM.....	18
IMD- ITEM DESCRIPTION	19
QTY - QUANTITY	20
MOA - MONETARY AMOUNT	21
PRI - PRICE DETAILS.....	22
RFF – REFERENCE (CO)	23
PAC - PACKAGE	24
ALC - ALLOWANCE OR CHARGE.....	26
MOA - MONETARY AMOUNT	27
UNS - SECTION CONTROL	28
MOA - MONETARY AMOUNT	29
TAX- DUTY/TAX/FEE DETAILS	30
MOA - MONETARY AMOUNT	32
UNT- MESSAGE TRAILER.....	33
UNZ - INTERCHANGE TRAILER	34
INVOICE MESSAGE EXAMPLE	35

Grundfos EDIFACT - INVOIC structure

Branching diagram of invoice message



Communication information Grundfos supports following communication methods:

- VAN
- FTP

FTP is the preferred communication protocol
FTP instructions will be provided on individual basis.

The VAN mailbox's are located at **Information Exchange** and are as follows:

Test environment: DKGRFOS/GBJ002

Production environment: DKGRFOS/GBJ028

UNA - Service string advise

Description To define the characters selected for use as delimiters and indicators in the rest of the interchange

Definitions

Element	EDIFACT	Grundfos specifics
Component data element separator	M an..1	Constant = : (colon)
Data element separator	M an..1	Constant = + (plus sign)
Decimal notation	M an..1	Constant = , (comma) or . (period)
Release indicator	M an..1	Constant = ? (question mark)
Reserved	M an..1	Blank / Space
Segment terminator	M an..1	Constant = ' (apostrophe)

Notation in EDIFACT column:

- M= Mandatory and C= Conditional
- AN=alphanumeric and N=numeric
- X= X char and ..X=max X chars

Example:

M an..15 = Field is **M**andatory, **alpha numeric** and max **15** char

Example Example:
UNA:+.?'

UNB - Interchange header (envelope)

Description To identify and specify the sender and receiver of a message.

Definitions

	Element	EDIFACT	Grundfos specifics
S001	Syntax identifier	M	
0001	Syntax identifier	M a..4	UNOC
0002	Syntax version number	M n..1	3
S002	Interchange sender	M	
0004	Sender identification	M an..35	XXXXXXXXXXXXXXXXXXXX....
0007	Partner identification code qualifier	C an..4	XXXX
0008	Address for reverse routing	C an..14	Not used
S003	Interchange recipient	M	
0010	Recipient identification	M an..35	ID's, see table below
0007	Partner identification code qualifier	C an..4	14 = EAN number
0014	Routing address	C an..14	Not used
S004	Date/time of preparation	M	
0017	Date	M n..6	YYMMDD
0019	Time	M n..4	HHMM
0020	Interchange control reference	M an..14	Unique reference assigned by sender
S005	Recipient's reference password	C	
0022	Recipient's reference / password	M an..14	Not used
0025	Recipient's reference / password qualifier	C an..2	Not used
0026	Application reference	C an..14	INVOIC
0029	Processing priority code	C a..1	Not used
0031	Acknowledgement request	C n..1	Not used
0032	Communications agreement	C an..35	Not used
0035	Test indicator	C n..1	1 = test, blank = production.

Example

Example:

**UNB+UNOC:3+5790000274017:14+5708601000836:14+990420:1137+17++
INVOIC++++1'**

**Table of
Grundfos
Sender/receiver
ID's**

!! IMPORTANT !!

Company	Short	Test ID	Production ID
GRUNDFOS Pumps Suzhou Ltd	GPC/CN	5708601000614	5708601000621
Grundfos A/S	GBJ/DK	5708601000836	5708601000126
Grundfos Sensor	SEN/DK	5708601000812	5708601000553
Grundfos Bio Booster A/S	GBB/DK	5708601000744	5708601000515
Grundfos Holding A/S	GMA/DK	5708601000775	5708601000461
Grundfos SC Denmark	GDK/DK	5708601000768	5790000010639
Grundfos Corporate Purchase AG	GCP/CH	5708601001857	5708601001840
Grundfos Operations Europe	GOE/DK	5708601001833	5708601001826
Grundfos Manufacturing Ltd.	GBW/GB	5708601000560	5708601000485
Grundfos Environment Finland Oy Ab	GEF/FI	5708601000577	5708601000355
Pompes Grundfos S.A.S	PGF/FR	5708601000683	5708601000423
Grundfos Pumpenfabrik GmbH	GWP/DE	5708601000645	5708601000065
Grundfos Distribution Service BV	GDS /NL	5708601000768	5708601000362
Grundfos Hungary Manufacturing Ltd.	GMH/HU	5708601000652	5708601000409
Bombas GRUNDFOS de Mexico	GMX/MX	5708601000669	5708601000676
Bombas GRUNDFOS de Mexico	MPX/MX	5708601000669	5708601000676
Grundfos Russia Manufact	GMR/RU	5708601000591	5708601000737
Grundfos Serbia d.o.o	GMS/RS	5708601001680	5708601001635
GRUNDFOS (Singapore) Pte. Ltd	GSI/SG	5708601001697	5708601001222
Grundfos Handels AG Taiwan Branch	GTW/TW	5708601000638	5708601000331
Grundfos CBS Inc.	GCB/US	5708601000690	5708601000706
Grundfos Manufacturing Corp.	GMU/US	5708601000607	5708601000072
Peerless Pump Company	PPU/US	5708601001772	5708601001017
Yeomans Chicago Corporation	YCC/US	5708601001796	5708601001789

UNH - Message header

Description To head, identify and specify a message.

Definitions

	Element	EDIFACT	Grundfos specifics
0062	Message reference number	M an..14	Sender's unique message reference. Sequence number of the message in the interchange.
S009	Message identifier	M	
0065	Message type identifier	M an..6	INVOIC = Invoice message
0052	Message type version number	M an..3	D
0054	Message type release number	M an..3	96A
0051	Controlling agency	M an..2	UN
0057	Association assigned code	C an..6	Not used
0068	Common access reference	C an..35	Not used
S010	Status of the transfer	C	
0070	Sequence message transfer number	M n..2	Not used
0073	First/last sequence message transfer indication	C a1	Not used

Example

Example:
UNH+30+INVOIC:D:96A:UN'

BGM - Beginning of message

Description To indicate the type and function of a message and to transmit the identifying number.

Definitions

	Element	EDIFACT	Grundfos specifics
C002	Document/Message	M	
1001	Document/Message name, coded	M an..3	380 = Commercial invoice 381 = Credit note
1131	Code list qualifier	C an..3	Not used
3055	Code list responsible agency, coded	C an..3	Not used
1000	Document/Message name	C an..35	Not used
1004	Document/Message number	C an..35	Invoice number assigned by document sender. Max. 16 characters
1225	Message function, coded	C an..3	Not used
4343	Response type, coded	C an..3	Not used

Example

Example:
BGM+380+539602'

DTM - Date/time/period

Description To specify date, and/or time, or period.

Definitions

	Element	EDIFACT	Grundfos specifics
C507	Date/time/period	M	
2005	Date/time/period qualifier	M an..3	137 = Document date/time.
2380	Date/time/period	C an..35	Document date
2379	Date/time/period format qualifier	C an..3	102 = CCYYMMDD

Example

Example:

DTM+137:19990420:102'

RFF – Reference (CO)

Description To specify a reference.

Definitions

	Element	EDIFACT	Grundfos specifics
C506	Reference	M	
1153	Reference qualifier	M an..3	CO = Customer order number
1154	Reference number	M an..35	Order number
1156	Line number	M an..6	Not used
4000	Reference version number	M an..35	Not used

Example

Example:
RFF+CO:01671727'

NAD- Name and address

Description To specify the name and address and their related functions.

Definitions

Element		EDIFACT	Grundfos specifics
Func	To specify the name and address and their related functions.		
Element		EDIFACT	Grundfos specifics
3035	Party qualifier	M an..3	BY = Buyer DP = Delivery party SU = Supplier IV = Invoicee RE = Receiver of invoice remittance
C082	Party identification details	C	
3039	Party id, identification	M an..17	When 3035 = BY or SU then Party identification
1131	Code list qualifier	C an..3	Not used
3055	Code list responsible agency, coded	C an..3	When 3035 = BY or SU then 9 = EAN id or ZZZ = Mutually defined
C058	Name and address	C	
3124	Name and address line	M an..35	When 3035 = SU then Company name
3124	Name and address line	C an..35	Not used
3124	Name and address line	C an..35	Not used
3124	Name and address line	C an..35	Not used
3124	Name and address line	C an..35	Not used
C080	Party name	C	
3036	Party name	M an..35	When 3035 = DP then Company name
3036	Party name	C an..35	Not used

3036	Party name	C an..35	Not used
3036	Party name	C an..35	Not used
3036	Party name	C an..35	Not used
3045	Party name format, coded	C an..3	Not used
C059	Street	C	
3042	Street and number / p.o box	M an..35	When 3035 = DP then Street and number
3042	Street and number / p.o box	C an..35	Not used
3042	Street and number / p.o box	C an..35	Not used
3164	City name	C an..35	When 3035 = DP then City name
3229	Country sub-entity identification	C an..9	When 3035 = DP then sub-entity
3251	Postcode identification	C an..9	When 3035 = DP then Postal / Zip code
3207	Country code, coded	C an..3	When 3035 = DP then Country code ISO 3166

Example

Example:

NAD+BY+5708601000836::9'**NAD+SU++SANDVIK A/S'****NAD+DP+++GRUNDFOS A/S+POUL DUE JENSENS VEJ****7+BJERRINGBRO++8850+DK'**

RFF – Reference (VA+ADE)

Description To specify a reference.

Definitions

	Element	EDIFACT	Grundfos specifics
C506	Reference	M	
1153	Reference qualifier	M an..3	VA = VAT registration number ADE = Account number
1154	Reference number	M an..35	When 1153 = VA then Registration number , see also following table When 1153 = ADE then Account number
1156	Line number	M an..6	Not used
4000	Reference version number	M an..35	Not used

Example

Example:

RFF+VA:DK37499919'

RFF+ADE:00000767'

****IMPORTANT****

!! IMPORTANT !!

RRF+VA segment - Always specify the registration number for both parties.

RRF+ADE segment - If the Grundfos company uses only one supplier number this RFF segment is optional.

If more than one supplier number is used by the Grundfos company this RFF segment is mandatory and shall be returned in it's original form (see order).

Recommended is to send this RFF segment to ensure invoicing on the correct account.

Company	Short	VAT registration number
Grundfos A/S	GBJ/DK	DK37499919
Grundfos Sensor	SEN/DK	DK29185247
Grundfos Manufacturing Ltd.	GBW/GB	GB196214453002
Grundfos CBS Inc.	GCB/US	N/A
Grundfos Environment Finland Oy Ab	GEF/FI	FI15997966
Grundfos Hungary Manufacturing Ltd.	GMH/HU	HU11863650
Grundfos Russia Manufact	GMR/RU	N/A
Grundfos Manufacturing Corp.	GMU/US	N/A
GRUNDFOS Pumps Suzhou Ltd	GPC/CN	N/A
Grundfos Handels AG Taiwan Branch	GTW/TW	N/A
Grundfos Pumpenfabrik GmbH	GWP/DE	DE134844702
Bombas GRUNDFOS de Mexico	GMX/MX	N/A
Pompes Grundfos S.A.S	PGF/FR	FR05372800227
Grundfos Bio Booster A/S	GBB/DK	DK29195633

CUX - Currencies

Description To specify currencies used in the transaction and relevant details for the rate of exchange.

Definitions

	Element	EDIFACT	Grundfos specifics
C504	Currency details	C	
6347	Currency details qualifier	M an..3	2 = Reference currency
6345	Currency, coded	C an..3	ISO 4217 three alpha
6343	Currency qualifier	C an..3	9 = Order currency
6348	Currency rate base	C n..4	Not used
C504	Currency details	C	
6347	Currency details qualifier	M an..3	Not used
6345	Currency, coded	C an..3	Not used
6343	Currency qualifier	C an..3	Not used
6348	Currency rate base	C n..4	Not used
6345	Rate of exchange	C n..12	Not used
6341	Currency market exchange, coded	C an..3	Not used

Example

Example:
CUX+2:EUR:9'

LIN - Line item

Description To identify a line item and configuration.

Definitions

	Element	EDIFACT	Grundfos specifics
1082	Line item number	C n..6	Application generated number of the count of invoice lines.
1229	Action request / notification, coded	C an..3	Not used
C212	Item number identification	C	
7140	Item number	C an..35	Item number
7143	Item number type, coded	C an..3	IN = Buyer's item number
1131	Code list qualifier	C a n..3	Not used
3055	Code list responsible agency, coded	C an..3	Not used
C829	Sub-line information	C an..3	Not used
5495	Sub-line indicator, coded	C an..3	Not used
1082	Line item number	C n..6	Not used
1222	Configuration level	C n..2	Not used
7083	Configuration, coded	C an..3	Not used

Example

Example:

LIN+1++V0370246:IN'

IMD- Item description

Description To describe an item in either an industry or free format.

Definitions

	Element	EDIFACT	Grundfos specifics
7077	Item description type, coded	C an..3	F = Free form
7081	Item characteristic, coded	C an..3	Not used
C273	Item description	C	
7009	Item description identification	C an..7	Not used
1131	Code list qualifier	C an..3	Not used
3055	Code list responsible agency, coded	C an..3	Not used
7008	Item description	C an..35	Item description 1
7008	Item description	C an..35	Item description 2
7383	Surface/layer indicator, coded	C an..3	Not used

Example

Example:

IMD+F++:::STÅLHOLDER COROMANT r 142.0-16-11'

QTY - Quantity

Description To specify a pertinent quantity

Definitions

	Element	EDIFACT	Grundfos specifics
C186	Quantity details	M	
6063	Quantity qualifier	M an..3	47 = Invoiced quantity
6060	Quantity	M n..15	Quantity
6411	Measure unit qualifier	C an..3	Common code from UN/CEFACT Recommendation 20

Example

Example:
QTY+47:5:PCE'

MOA - Monetary amount

Description To specify a monetary amount.

Definitions

	Element	EDIFACT	Grundfos specifics
C516	Monetary amount	M	
5025	Monetary amount type qualifier	M an..3	55= Duty amount 66 = Goods item total 106 = Packing cost
5004	Monetary amount	C n..18	Net price x quantity for line item. Max. 2 decimals.
6345	Currency, coded	C an..3	ISO 4217 three alpha code
6343	Currency qualifier	C an..3	Not used
4405	Status, coded	C an..3	Not used

Example

Example:
MOA+66:49.15:EUR'

****IMPORTANT****

!! IMPORTANT !!

If 5025 = 106 or 5025 = 55 it is expected that the description of the packing is made in the PAC segment, which will be used as narration.

PRI - Price details

Description To specify price information.

Definitions

	Element	EDIFACT	Grundfos specifics
C509	Price information	C	
5125	Price qualifier	M an..3	AAA = Calculation net (Net Unit Price)
5118	Price	C n..15	Price per unit basis. Max. 2 decimals.
5375	Price type, coded	C an..3	CT = Contract
5387	Price type qualifier	C an..3	Not used
5284	Unit price basis	C n..9	Basis number
6411	Measure unit qualifier	C an..3	Common code from UN/CEFACT Recommendation 20
5213	Sub-line price change, coded	C an..3	Not used

Example

Example:
PRI+AAA:9.83:CT::1:PCE'

RFF – Reference (CO)

Description To specify a reference

Definitions

	Element	EDIFACT	Grundfos specifics
C506	Reference	M	
1153	Reference qualifier	M an..3	CO = Customer order number
1154	Reference number	M an..35	Order number
1156	Line number	M an..6	Line number on the order
4000	Reference version number	C an..35	Not used

Example Example:
RFF+CO:01671727:1'

****IMPORTANT****

!! IMPORTANT !!

The RFF+CO segment shall be returned in it's original form when the supplier is sending invoices.

Element 1156 in this segment has to contain the value from element 1082 in the LIN segment on the received purchase order or delivery forecast – not sales order line number.

PAC - Package

Description To describe the number and type of packages/physical units.

Definitions

	Element	EDIFACT	Grundfos specifics
7224	Number of packages	C n..8	Not used
C531	Packaging details	C	
7075	Packaging level, coded	C an..3	Not used
7233	Packaging related information, coded	C an..3	Not used
7073	Packaging terms and conditions, coded	C an..3	Not used
C202	Package type	C	
7065	Type of packages identification	C an..17	PX=EUR pallet FR = Frame JO= Joist PVC=PolyVinyl Chloride
1131	Code list qualifier	C an..3	Not used
3055	Code list responsible agency, coded	C an..3	Not used
7064	Type of package	C an..35	Text describing the packing
C402	Package type identification	C	
7077	Item description type, coded	M an..3	Not used
7064	Type of packages	M an..35	Not used
7143	Item number type, coded	C an..3	Not used
7064	Type of packages	C an..35	Not used
7143	Item number type, coded	C an..3	Not used
C532	Returnable package details	C	
8395	Returnable package freight payment responsibility, coded	C an..3	Not used
8393	Returnable package load contents, coded	C an..3	Not used

Example

Example:

PAC+++PX::Pallet'

PAC+++ FR::Frame'

PAC+++ JO::Joist'

PAC+++PVC::PVC'

****IMPORTANT****

!! IMPORTANT !!

This segment is used as narration when element 5025 = 106 or 5025 = 55 in the MOA segment.

When invoicing euro pallets, pallet frames or joists element C202/7065 must be filled accordingly.

When invoicing PVC duty element C202/7065 must be PVC.

ALC - Allowance or charge

Description To identify allowance or charge details.

Definitions

	Element	EDIFACT	Grundfos specifics
5463	Allowance or charge qualifier	M an..3	C = Charge
C552	Allowance/charge information	C	
1230	Allowance or charge number	C an..35	Not used
5189	Charge/allowance description, coded	C an..3	Not used
4471	Settlement, coded	C an..3	Not used
1227	Calculation sequence indicator, coded	C an..3	Not used
C552	Special services identification	C an..3	
7161	Special services, coded	C an..3	Not used
1131	Code list qualifier	C an..3	Not used
3055	Code list responsible agency, coded	C an..3	Not used
7160	Special service	C an..35	Not used

Example Example:
ALC+C'

MOA - Monetary amount

Description To specify a monetary amount.

Definitions

	Element	EDIFACT	Grundfos specifics
C516	Monetary amount	M	
5025	Monetary amount type qualifier	M an..3	23 = Charge amount
5004	Monetary amount	C n..18	Amount Max. 2 decimals.
6345	Currency, coded	C an..3	ISO 4217 three alpha code
6343	Currency qualifier	C an..3	Not used
4405	Status, coded	C an..3	Not used

This segment is used to specify surcharge for cutting, alloy.....

Example

Example:
MOA+23:13.6:EUR'

UNS - Section control

Description To separate header, detail and summary sections of a message.

Definitions

	Element	EDIFACT	Grundfos specifics
0081	Section identification	M a..1	S = Detail/summary section separation

Example Example:
UNS+S'

MOA - Monetary amount

Description To specify a monetary amount.

Definitions

	Element	EDIFACT	Grundfos specifics
C516	Monetary amount	M	
5025	Monetary amount type qualifier	M an..3	64 = Freight charge 67 = Insurance 86 = Message total monetary amount 136= Total invoice additional amount 286 = Administration charge
5004	Monetary amount	C n..18	Amount Max. 2 decimals.
6345	Currency, coded	C an..3	ISO 4217 three alpha code
6343	Currency qualifier	C an..3	Not used
4405	Status, coded	C an..3	Not used

Segment MOA + 136 is used for rounding amount on invoice total amount, If rounding is negative use minus sign, "-". If positive no sign is used.

Example

Example:

MOA+64:100.95:EUR'

MOA+67:50.50:EUR'

MOA+86:347.82:EUR'

MOA+136:-0.49:EUR'

MOA+286:25.25:EUR'

TAX- Duty/tax/fee details

Description To specify relevant duty/tax/fee information.

Definitions

	Element	EDIFACT	Grundfos specifics
5283	Duty/Tax/Fee function qualifier	M an..3	7 = Tax.
C241	Duty/Tax/Fee type	C	
5153	Duty/tax/Fee type, coded	C an..3	VAT = Value added tax
1131	Code list qualifier	C an..3	Not used
3055	Code list responsible agency, coded	C an..3	Not used
5152	Duty/Tax/Fee type	C an..35	Not used
C533	Duty/Tax/Fee	C	
5289	Duty/Tax/Fee account identification	M an..6	Not used
1131	Code list qualifier	C an..3	Not used
3055	Code list responsible agency, coded	C an..3	Not used
5286	Duty/Tax/Fee assessment basis	C an..15	Not used
C243	Duty/Tax/Fee Detail	C	
5279	Duty/Tax/Fee rate identification	C an..7	Not used
1131	Code list qualifier	C an..3	Not used
3055	Code list responsible agency, coded	C an..3	Not used
5278	Duty/Tax/Fee rate	C an..17	Not used
5273	Duty/Tax/Fee rate basis identification	C an..12	Not used
1131	Code list qualifier	C an..3	Not used
3055	Code list responsible agency, coded	C an..3	Not used

5305	Duty/Tax/Fee category, coded	C an..3	Not used
3446	Party tax identification number	C an..20	Not used

Example

Example:
TAX+7+VAT'

MOA - Monetary amount

Description To specify a monetary amount.

Definitions

	Element	EDIFACT	Grundfos specifics
C516	Monetary amount	M	
5025	Monetary amount type qualifier	M an..3	124 = Tax amount
5004	Monetary amount	C n..18	Amount Max. 2 decimals.
6345	Currency, coded	C an..3	ISO 4217 three alpha code
6343	Currency qualifier	C an..3	Not used
4405	Status, coded	C an..3	blank = use 9 = Information

Example

Example:

MOA+124:15.29:EUR'

MOA+124:15.29:EUR::9'

UNT- Message trailer

Description To end and check completeness of a message.

Definitions

	Element	EDIFACT	Grundfos specifics
0074	Number of segments in a message	M n..6	The total number of segments in the message is detailed here.
0062	Message reference number	M an..14	The message reference numbered detailed here should equal the one specified in the UNH segment.

Example

Example:
UNT+33+30'

UNZ - Interchange trailer

Description To separate header, detail and summary sections of a message.

Definitions

	Element	EDIFACT	Grundfos specifics
0036	Interchange control count	M an..6	The count of the number of messages.
0020	Interchange control reference	M an..14	Shall be identical to 0020 in UNB segment.

Example Example:
UNZ+1+17'

Invoice message example

Invoice message example UNA:+.? '
UNB+UNOC:3+5790000274017:14+5708601000836:14+990420:1137+17++INVOIC+++1'
UNH+30+INVOIC:D:96A:UN'
BGM+380+539602'
DTM+137:19990420:102'
RFF+CO:01671727'
NAD+BY+5708601000836::9'
RFF+VA:DK37499919'
NAD+SU++SANDVIK A/S'
RFF+VA:DK19430839'
RFF+ADE:00000767'
NAD+DP+++GRUNDFOS A/S+POUL DUE JENSENS VEJ 7+BJERRINGBRO++8850+DK'
CUX+2:EUR:9'
LIN+1++V0370246:IN'
IMD+F+++::STÅLHOLDER COROMANT r 142.0-16-11'
QTY+47:5:PCE'
MOA+66:49.15:EUR'
PRI+AAA:9.83:CT::1:PCE'
RFF+CO:01671727:1'
ALC+C'
MOA+23:13.6:EUR'
LIN+2++:IN'
IMD+F+++::Packing'
QTY+47:2:PCE'
MOA+106:50:EUR'
PRI+AAA:25:CT::1:PCE'
PAC+++::Pallet'
UNS+S'
MOA+64:100.95:EUR'
MOA+67:50.50:EUR'
MOA+86:362.00:EUR'
MOA+136:0.19:EUR'
MOA+286:25.25:EUR'
TAX+7+VAT'
MOA+124:72.36:EUR'
TAX+7+VAT'
MOA+124:539.82:DKK::9'
UNT+36+30'
UNZ+1+17'